



# SIT STAND ELECTRIC AUTOMATIC & MANUAL HEIGHT ADJUSTABLE DESKS

ADJUSTABLE HEIGHT WORKCENTERS

ECLIPSE SIT STAND ELECTRIC & MANUAL



## THE ABSOLUTE BEST SOLUTION FOR HEIGHT ADJUSTABILITY

Featuring high quality, German engineering and design, the Eclipse Sit Stand desk is the foundation for the most innovative adjustable height workcenter for today's professional workplace. Eclipse Sit Stand meets the rigorous demands of the modern workplace with a weight load capacity of 140 Kilograms, and features hidden crossbar design that provides greater knee clearance for the user and making it ideal for wheelchair use.

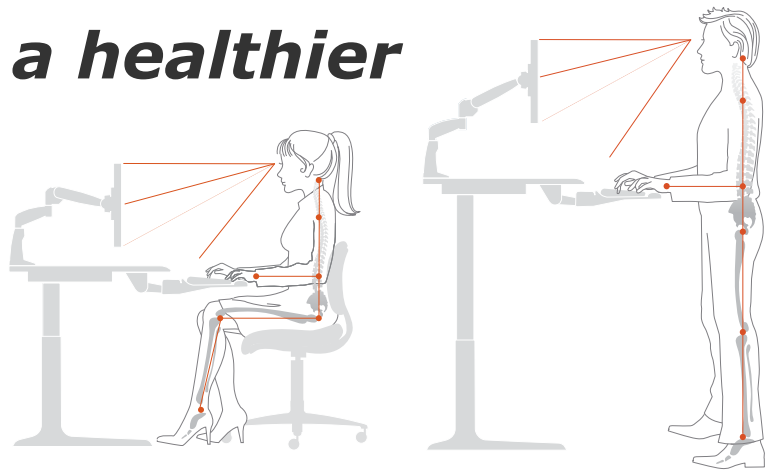
Eclipse Sit Stand is available in the widest range of size options as a straight desk or corner workstation configurations and feature options, making it the most versatile workcenter in the Eclipse workstation portfolio.



Programmable Switch with digital readout, preset heights, and much more.



# ***Make the move to a healthier workplace.***



**The human body** is not designed to remain in the same position for hours at a time. A quick Google search will quickly turn up countless studies from around the world that show that sitting down all day at work has a negative impact on health.

Adjustable height workcenters address this need to move and allow the user to change position frequently throughout the day. They are the foundation for any ergonomically equipped workspace and can be the single most effective means of achieving flexibility, maximising comfort and increasing productivity in any office environment.

**The size and shape** of the workspace will determine the optimal size and shape of the worksurface you select. Because adjustable height worksurfaces move, you should allow 25mm of clearance at each side and in back of the worksurface to avoid pinch points and scraping.

**Knowing the type of equipment** to be used on the worksurface is crucial when selecting an adjustable height workcenter. When selecting a non-electric workcenter such as a crank wind table the weight of the equipment to be placed on the worksurface will affect the amount of human force required to adjust the height of the work center. The more force required, the less ergonomic the solution.

**Understanding the work** to be performed and the types of accessories to be used with the worksurface are also key considerations. Workcenters can have many different types of frame supports and structures and may not provide the clearances required for the installation of other key accessories such as adjustable monitor supports and keyboard trays. The Eclipse Sit Stand frame structure does not inhibit the use of these accessories.

**The range of adjustability required** is one of the most important considerations when selecting the right adjustable workcenter. Australian Standard 3590.2-1990 recommends the minimum range of adjustability for standing workstations from 900mm to 1100mm. Eclipse has multiple options available that exceeds the requirements set down in the Australian Standards for height adjustable desks. Our workstations adjust from 620 - 1270mm making them suitable for everyone.

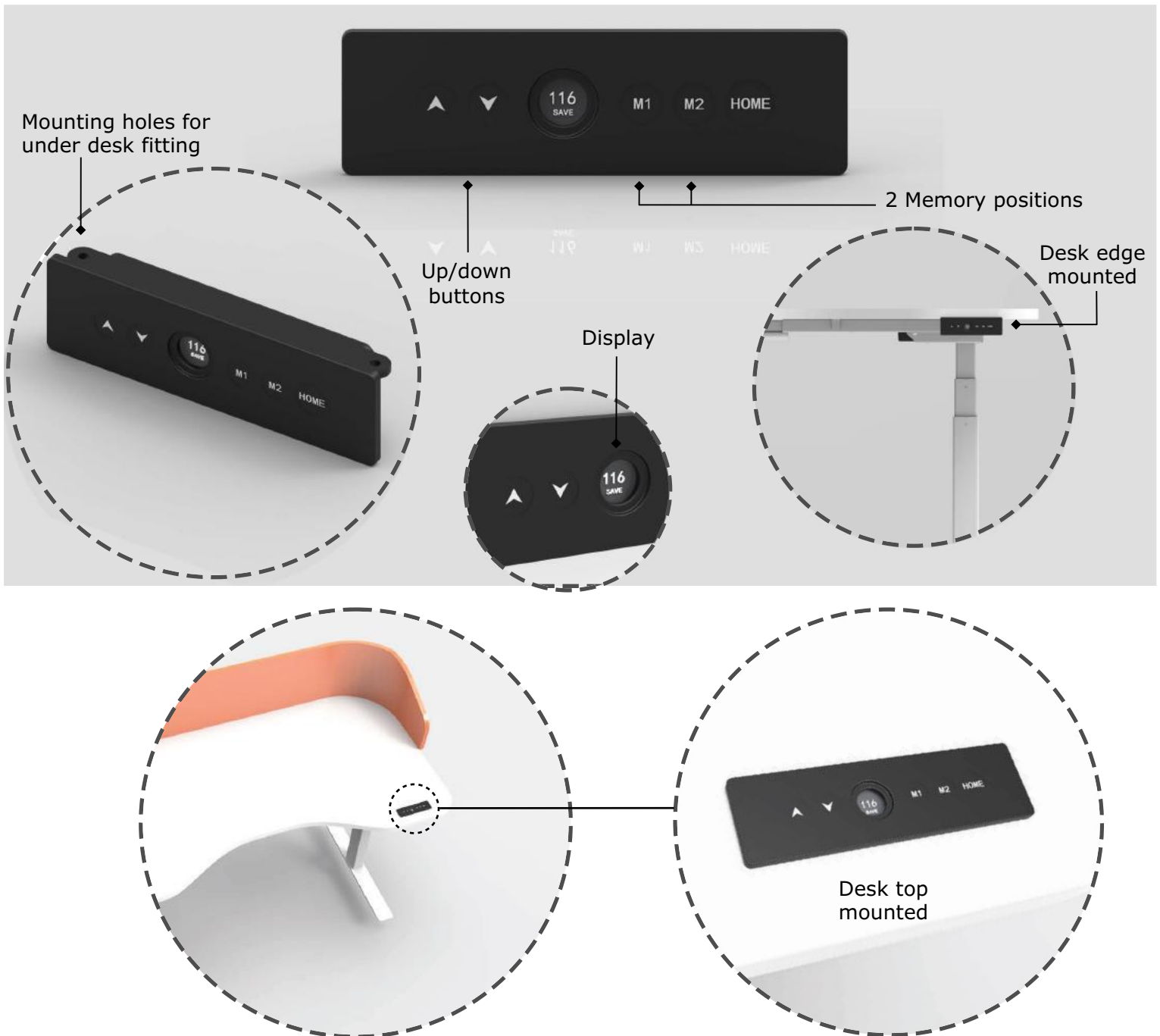
# ***Ergo Zero control***



## **The new Ergo Zero Control Features:**

- Power saving Capacitive touch screen
- Home position and two user programmable height settings
- Round screen design
- Auto power save mode when not in use
- Can be mounted in desk top or under front edge

# Ergo Zero control, operating instructions



## DIRECTIONS FOR USE

- Once the workstation has been placed into position, reset it by pressing the down arrow and lower it to its lowest point.
- Lightly touch down the up or down arrows to raise or lower the workstation.
- Press the 'home' button to return back its home position which is 720mm high.
- To use the 'M1' and 'M2' memory settings, press and hold when at the desired height for 5 seconds. You will hear a beep to notify you your setting is recorded in memory. Release to activate the new setting.
- The control switch will power down after 30 seconds if not used, lightly touch the up or down button to turn it back on.

## IMPORTANT NOTE

Ensure that there are no obstructions above or below that may impede the frame raising or lowering as this may cause damage.

## ADJUSTABLE HEIGHT WORKCENTERS

# SIT/STAND ELECTRIC AND MANUAL FRAME SETS

All Frame Sets include: legs, brackets, motor(s) and cables.

### Specifications for Electric model

- Frame options: 2-leg and 3-leg frames
- Suitable for 600 to 1200mm Work surface depths
- Widths from 1200 to 2200mm depending on shape
- Finish, White
- Height Range: 620 to 1270mm
- Payload Capacity: 140Kg for 2-leg models  
210Kg for 3-leg models
- Travel Speed: 30mm per second
- Standby mode with zero power consumption

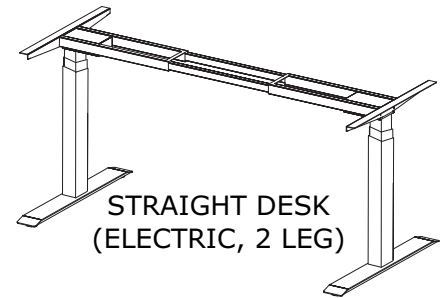
#### Styled Foot Set

- Foot dimensions: 680mm
- Control panel:
  - Programmable Switch with 3 preset positions
  - Standby mode with zero power consumption

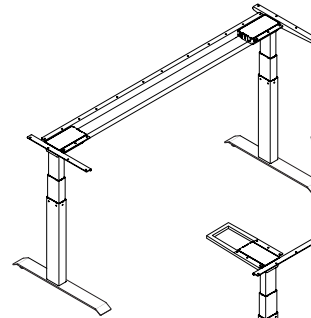


### Specifications for Manual model

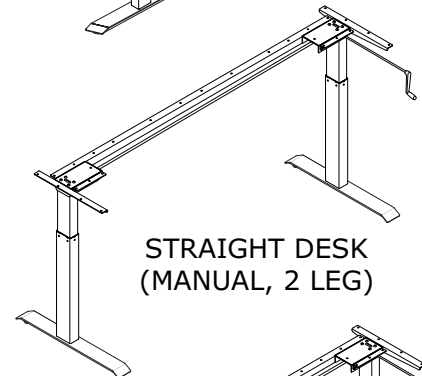
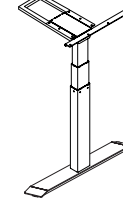
- Foldable crank handle
- Frame options: 2-leg and 3-leg frames
- Suitable for 600 to 1200mm Work surface depths
- Widths from 1200 to 2200mm depending on shape
- Finish, White
- Height Range: 700 to 1200mm
- Payload Capacity: 80Kg for 2-leg models  
120Kg for 3-leg models



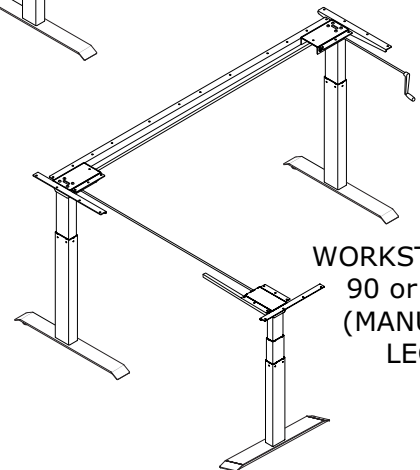
STRAIGHT DESK  
(ELECTRIC, 2 LEG)



WORKSTATION, 90  
or 120°  
(ELECTRIC, 3 LEG)

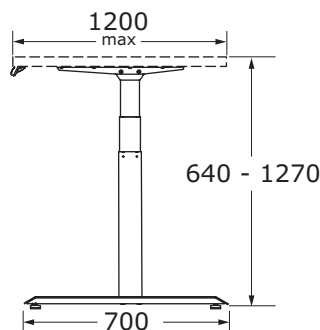
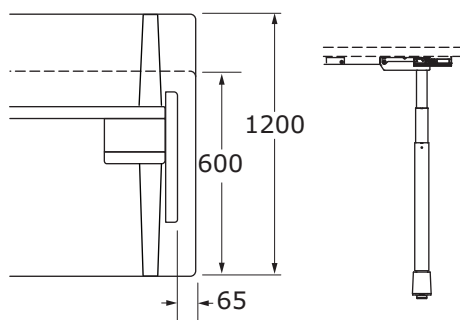


STRAIGHT DESK  
(MANUAL, 2 LEG)



WORKSTATION,  
90 or 120°  
(MANUAL, 3  
LEG)

#### Dimensions



Flat Foot



Access Office Industries Ph: 08 9493 3776

WWW. [www.accessoffice.com.au](http://www.accessoffice.com.au)

[sales@accessoffice.com.au](mailto:sales@accessoffice.com.au)



Recognised Preferred  
supplier to the Western  
Australian Government  
Association members



CUA FRN2012  
Library Shelving  
• Seating  
• Desks  
• Steel Storage



As an environmentally  
responsible company we  
are proud of our ISO  
14001 certification.