



Stools



Eclipse Stools - Medi Vinyl



Eclipse Cutter Stool



Eclipse Curie Stool

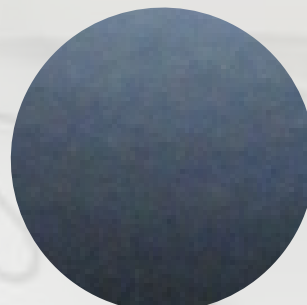


Eclipse Saddle Stool

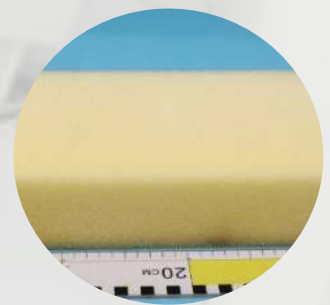
Anti Bacterial Tested vinyl: ISO22196



- Fitted with Sit-Lock Castors



- Medical Grade Vinyl



- Fire Retardant Foam





Stools



Eclipse Stools - Medi Vinyl



FEATURES

Eclipse Stools:

- 3 great designs to choose from
- Sit Lock Castors - Optional
- Fire retardent Foam
- Heavy duty Gas Lifts
- Optional Glides
- Polished Aluminum star bases
- Smooth Multi action seat mechanisms
- Approved to Australian standards
- These Stools have been tested for Strength, durability and stability to the below standard, by SGS testing facilities, the largest testing agency in the World.
- Test Conducted: AS/NZS 4438:1997. R20 2016



COLOURS



Medical Vinyl



SPECIFICATIONS

Product	Seat height	Seat width	Seat depth
Eclipse Cutter Stool	600 - 860	650	650
Eclipse Curie Stool	590 - 840	350	350
Eclipse Saddle Stool	450 - 580	250 / 430	420

*all sizes in mm & subject to change without notice

Specialized seating for use in medical facilities. The Eclipse range of Medi seating comes with ISO22196 tested Anti Bacterial grade medical Vinyl and fire retardent Foam. Most models have been tested to exceed Australian Standards. Eclipse seating - When you need to be sure.



WARRANTY

- 3 Years
- Covers Material & Workmanship
- Does not cover misuse or abuse

