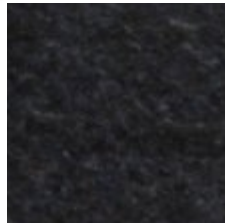


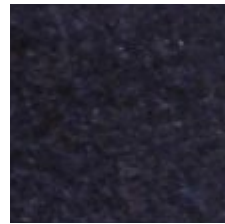
DR51602-02



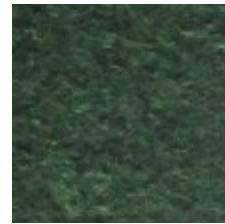
DR51602-07



DR51602-10



DR51602-29



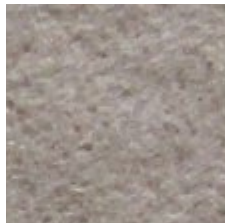
DR51602-43



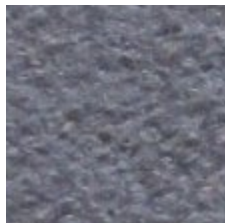
DR51602-46



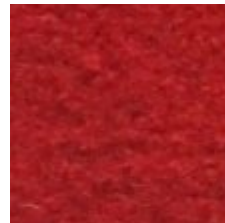
DR51602-51



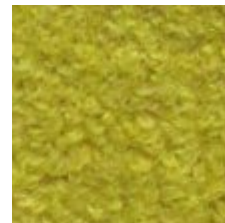
DR51602-59



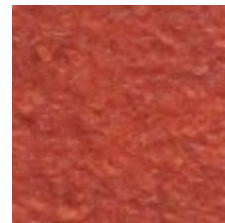
DR51602-12



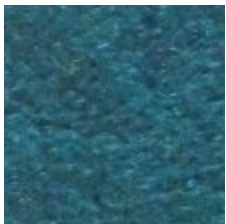
DR51602-17



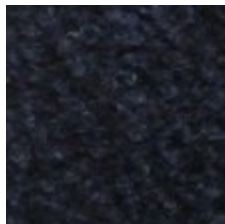
DR51602-21



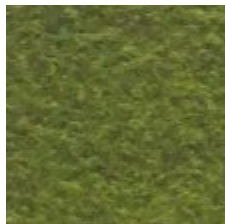
DR51602-63



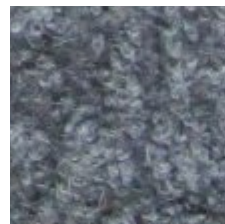
DR51602-67



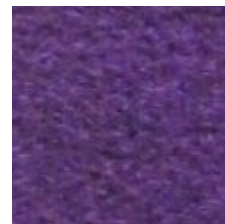
DR51602-76



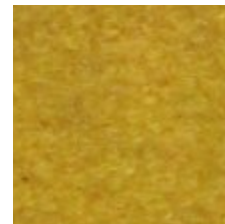
DR51602-81



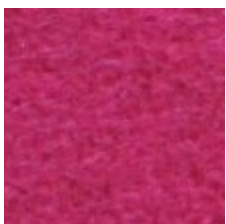
DR51602-85



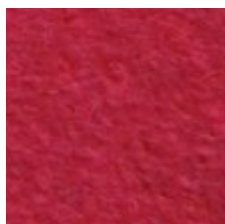
DR51602-86A



DR51602-90



DR51602-92



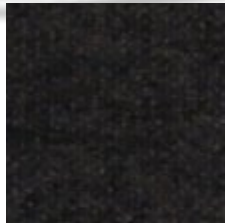
DR51602-93

Please note: Electronic reproduction of colours can vary and should not be considered accurate. We strongly recommend you view fabric sample before making your decision.

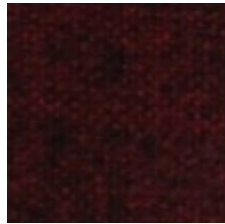
Material	Wool	100%
Weight	Lin, Metre Approx. Grams	680
Width	CM	150
Abrasion Resistance	Rubs - BS EN ISO 12947-2 (Martindale)	80 000
Pilling	BS EN ISO 12945-2	4-5
Colour Fastness	Scale 1-8, Max. 8-8S EN ISO 105-B02	5
Colour Fastness to Rubbing	Scala 1-5 Max. 5-EN ISO 105x1 2 (Wet/Dry)	4-5/4-5
Cleaning	Dry Cleaning 40c Shrinkage <1% 60c Shrinkage <3%	P-Cleaning
Flammability	EN10211&2, Calif. Tech. Bull. 117, Secretary. E. Onorm B 3825/A 3800 P1-B1/Q1	
NB:	Flame retardant performance is dependant upon the foam used.	
US ACT:	Pass Heavy Duty Upholstery	
Design/Colours	Inger Mosholt Nielsen	



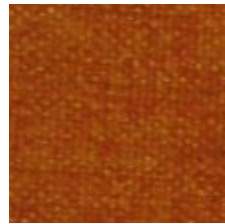
DVB128-007



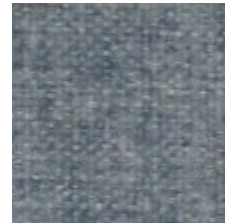
DVB128-102



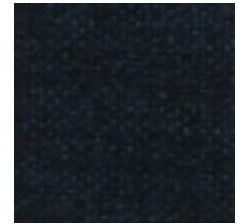
DVB128-200



DVB128-300



DVB128-600



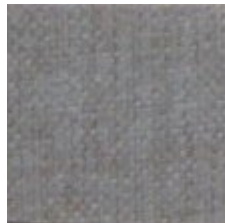
DVB128-603



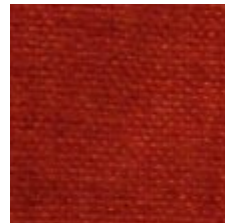
DVB128-803



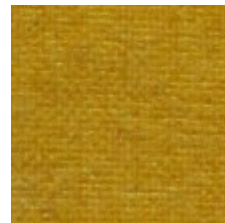
DVB128-804



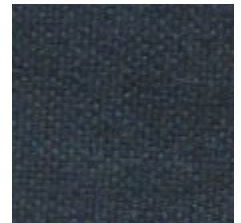
DVB128-806



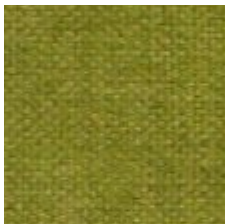
DVB128-301



DVB128-008



DVB128-009



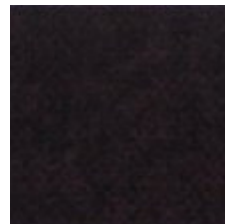
DVB128-500



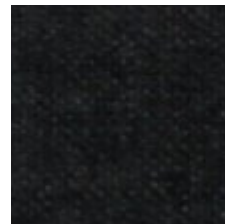
DVB128-501



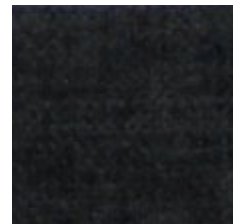
DVB128-700



DVB128-702



DVB128-801



DVB128-808



DVB128-900

Please note: Electronic reproduction of colours can vary and should not be considered accurate. We strongly recommend you view fabric sample before making your decision.

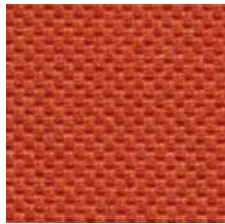
Material	Polyester	100%
Weight	Lin, Metre Approx. Grams	580
Width	CM	140
Abrasion Resistance	Rubs - BS EN ISO 12947-2 (Martindale)	80 000
Pilling	BS EN ISO 12945-2	4-5
Colour Fastness	Scale 1-8, Max. 8-8S EN ISO 105-B02	5
Colour Fastness to Rubbing	Scala 1-5 Max. 5-EN ISO 105xl 2 (Wet/Dry)	4-5/4-5
Cleaning	Dry Cleaning 40c Shrinkage <1% 60c Shrinkage <3%	P-Cleaning
Flammability	EN10211&2.Calif. Tech. Bull. 117, Secretary. E. Onorm B 3825/A 3800 P1-B1/Q1	
NB:	Flame retardant performance is dependant upon the foam used.	
US ACT:	Pass Heavy Duty Upholstery	
Design/Colours	Inger Mosholt Nielsen	



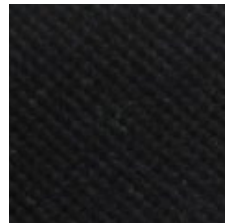
DA-60011



DA-60025



DA-60034



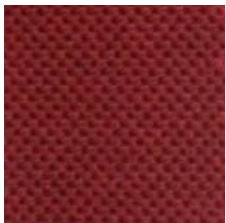
DA-60999



DA-61078



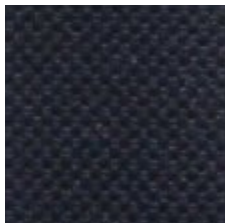
DA-68054



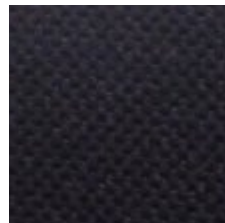
DA-64089



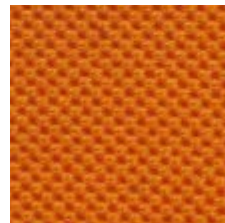
DA-66061



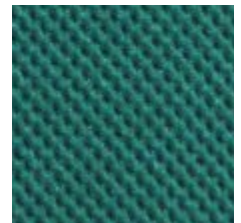
DA-66064



DA-PE17



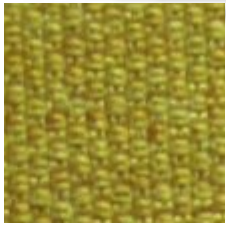
DA-PE18



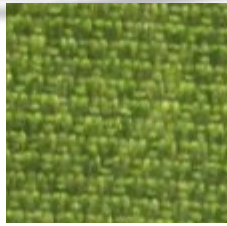
DA-PE19

Please note: Electronic reproduction of colours can vary and should not be considered accurate. We strongly recommend you view fabric sample before making your decision.

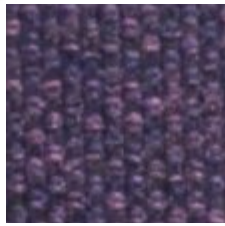
Material	Polyester	100%
Weight	Lin, Metre Approx. Grams	530
Width	CM	150
Abrasion Resistance	Rubs - BS EN ISO 12947-2 (Martindale)	80 000
Pilling	BS EN ISO 12945-2	4-5
Colour Fastness	Scale 1-8, Max. 8-8S EN ISO 105-B02	5
Colour Fastness to Rubbing	Scala 1-5 Max. 5-EN ISO 105xl 2 (Wet/Dry)	4-5/4-5
Cleaning	Dry Cleaning 40c Shrinkage <1% 60c Shrinkage <3%	P-Cleaning
Flammability	EN10211&2.Calif. Tech. Bull. 117, Secretary. E.	
	Onorm B 3825/A 3800 P1-B1/Q1	
NB:	Flame retardant performance is dependant upon the foam used.	
US ACT:	Pass Heavy Duty Upholstery	
Design/Colours	Inger Mosholt Nielsen	



DTTM-01



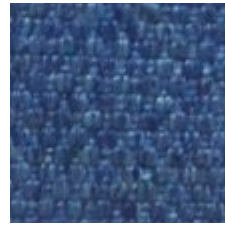
DTTM-02



DTTM-03



DTTM-04



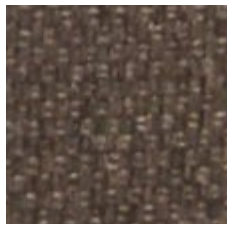
DTTM-06



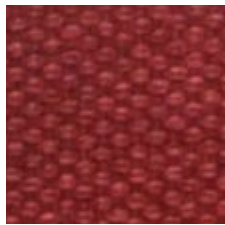
DTTM-07



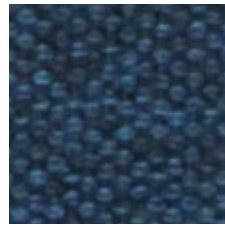
DTTM-08



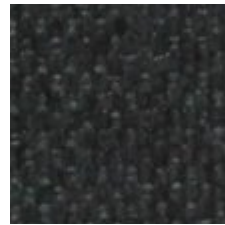
DTTM-09



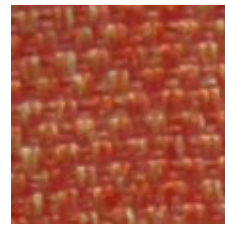
DTTM-10



DTTM-11



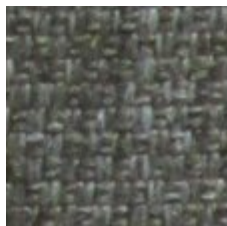
DTTM-12



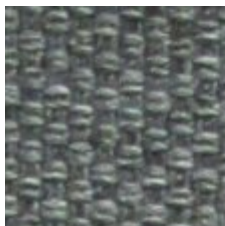
DTTM-13



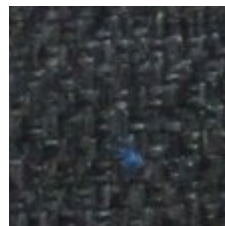
DTTM-14



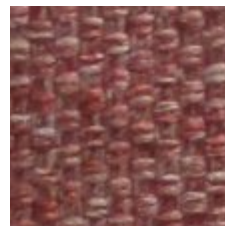
DTTM-16



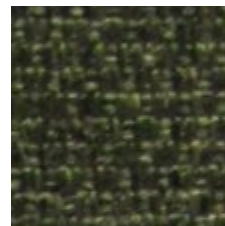
DTTM-17



DTTM-18



DTTM-19



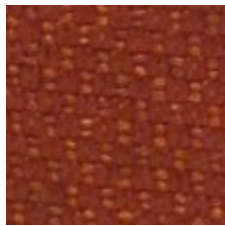
DTTM-21



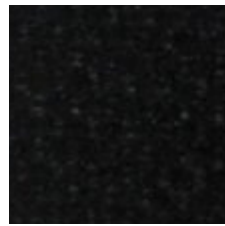
DTTM-22



DTTM-23



DTTM-211



DTTM-212

Please note: Electronic reproduction of colours can vary and should not be considered accurate. We strongly recommend you view fabric sample before making your decision.

Material	Polyester	100%
Weight	Lin, Metre Approx. Grams	260
Width	CM	140
Abrasion Resistance	Rubs - BS EN ISO 12947-2 (Martindale)	80 000
Pilling	BS EN ISO 12945-2	4-5
Colour Fastness	Scale 1-8, Max. 8-8S EN ISO 105-B02	5
Colour Fastness to Rubbing	Scala 1-5 Max. 5-EN ISO 105xl 2 (Wet/Dry)	4-5/4-5
Cleaning	Dry Cleaning 40c Shrinkage <1% 60c Shrinkage <3%	P-Cleaning
Flammability	EN10211&2.Calif. Tech. Bull. 117, Secretary. E. Onorm B 3825/A 3800 P1-B1/Q1	
NB:	Flame retardant performance is dependant upon the foam used.	
US ACT:	Pass Heavy Duty Upholstery	
Design/Colours	Inger Mosholt Nielsen	